

*Continuous Forms Processing  
& Mailing Equipment*



## **SPEDO 9700 SLITTER MERGER SPARE PARTS LIST**

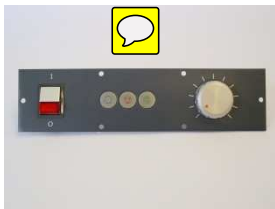
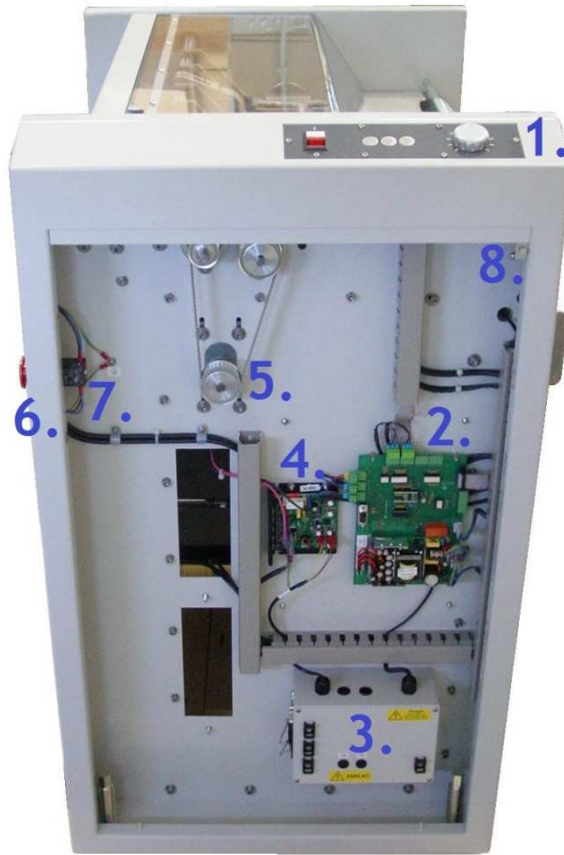
**SPEDO UK LTD, 76 WOOLMER WAY, BORDON, HAMPSHIRE GU35 9QF, UK  
TEL: +44 (0) 1420 487442 • FAX: +44 (0) 1420 477827  
E-MAIL: [spedo@spedouk.com](mailto:spedo@spedouk.com) • WEBSITE: [www.spedouk.com](http://www.spedouk.com)**

**INDEX**

<b>ELECTRICAL PARTS</b>	PAGES 3 - 6
9700S .....	3 - 4
9700E .....	5 - 6

<b>MECHANICAL PARTS</b>	PAGES 7 - 18
DRIVER COMPARTMENT .....	7
TRANSPORT ASSEMBLY .....	9 - 11
PAPER GUIDES .....	12
CENTRE CUTTER ASSEMBLY .....	12 - 14
TENSION BRUSH ASSEMBLY .....	15
INFEED GUIDE ASSEMBLY .....	16
INDEX WHEEL ASSEMBLY .....	17
SAFETY COVER ASSEMBLY .....	17
OUTFEED COMPONENTS .....	18

9700S ELECTRICAL PARTS



1. SP 007 203  
OPERATOR PANEL  
COMPLETE



2. SP 006 162  
PCB, MAIN CONTROL



3. SP 007 237  
9700S DISTRIBUTION  
BOX



4. SP 004 577  
PCB, MOTOR  
CONTROL



5. SP 004 829  
MOTOR, MAIN DRIVE



6. SP 005 653  
SWITCH, EMERGENCY  
STOP



7. SP 006 048  
SWITCHBLOCK,  
EMERGENCY STOP



8. SP 004 460  
SWITCH, SAFETY  
COVER



SP 006 094  
SENSOR  
[NOT SHOWN IN PHOTO]



SP 000 284  
SWITCH, RUNOUT  
[NOT SHOWN IN PHOTO]

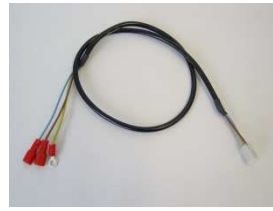
9700S CABLES



SP 007 246  
CABLE, LOGIC SAFETY  
COVER SWITCH



SP 007 243  
CABLE, ON/OFF SWITCH



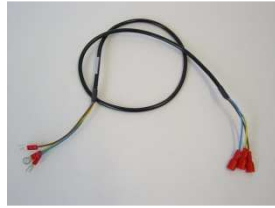
SP 007 242  
CABLE, LOGIC CONTROL  
POWER



SP 007 240  
CABLE, LOOP CONTROL



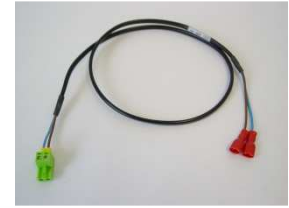
SP 007 239  
CABLE, OPERATOR RIBBON



SP 007 244  
CABLE, MAINS INPUT



SP 007 241  
CABLE, MOTOR CONTROL  
POWER



SP 007 245  
CABLE, RUNOUT SWITCH

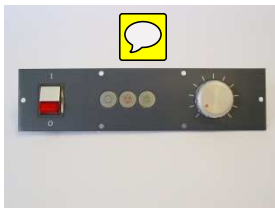


SP 007 211  
CABLE, LOOP CONTROL  
EXTERNAL



SP 000 203  
CABLE, MAINS M/C TO M/C

9700E ELECTRICAL PARTS



1. SP 007 203  
OPERATOR PANEL  
COMPLETE



2. SP 007 214  
CONTROL PANEL  
COMPLETE



3. SP 007 216  
9700E DISTRIBUTION  
BOX



4. SP 007 204  
SERVO DRIVER



5. SP 005 539  
MOTOR



6. SP 005 653  
SWITCH, EMERGENCY  
STOP



7. SP 006 048  
SWITCHBLOCK,  
EMERGENCY STOP



8. SP 004 460  
SWITCH, SAFETY  
COVER



SP 006 094  
SENSOR  
[NOT SHOWN IN PHOTO]



SP 000 284  
SWITCH, RUNOUT  
[NOT SHOWN IN PHOTO]

9700E CABLES



SP 006 020  
ROLLER DRIVE MOTOR  
CABLE



SP 006 023  
ROLLER DRIVE ENCODER  
CABLE



SP 007 202  
SERVO DRIVE I/O CABLE



SP 007 205  
SERVO DRIVER POWER  
CABLE



SP 007 215  
RIBBON CABLE



SP 006 774  
9400 E-STOP CABLE



SP 007 209  
MAINS SAFETY COVER  
SWITCH CABLE



SP 007 210  
LOGIC SAFETY COVER  
SWITCH CABLE



SP 007 208  
PAPER RUN OUT SENSOR  
CABLE



SP 007 207  
BUFFER EMPTY SENSOR  
CABLE



SP 007 206  
BUFFER FULL SENSOR  
CABLE



SP 006 773  
9400 ON/OFF CABLE



SP 007 213  
CABLE, E-NET EXTERNAL



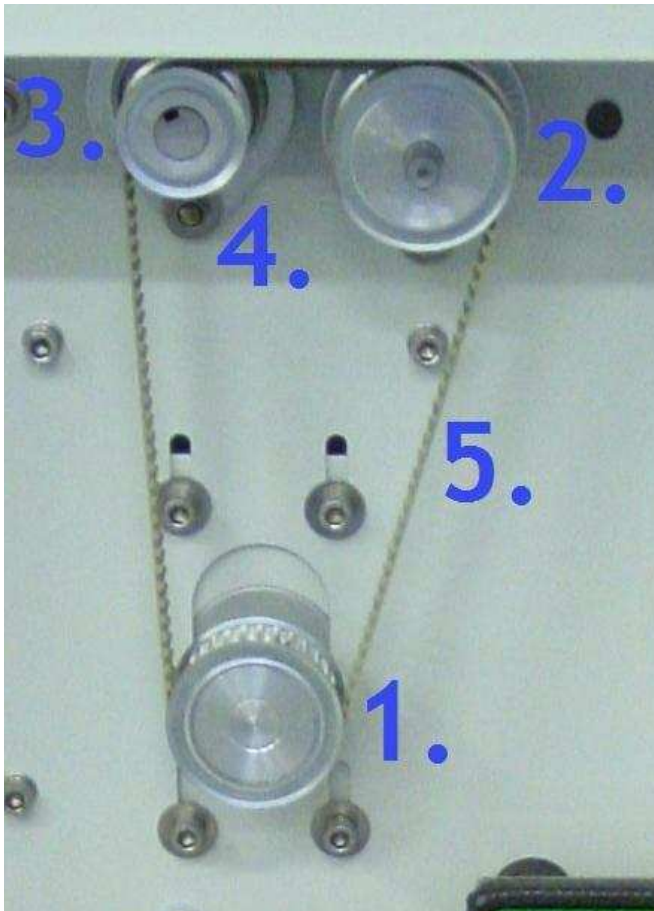
SP 007 211  
CABLE, LOOP CONTROL  
EXTERNAL



SP 000 203  
CABLE, MAINS M/C TO M/C  
EXTERNAL

MECHANICAL PARTS

DRIVER COMPARTMENT



1. SP 007 197  
DRIVE MOTOR PULLEY  
**9700E**



SP 007 201  
DRIVE MOTOR PULLEY  
**9700S**



2. SP 007 200  
SPLINED SHAFT DRIVE  
PULLEY



3. SP 006 816  
PULLEY, BLADE DRIVE,  
20T



4. SP 002 133  
BEARING



5. SP 006 838  
BELT, MAIN DRIVE



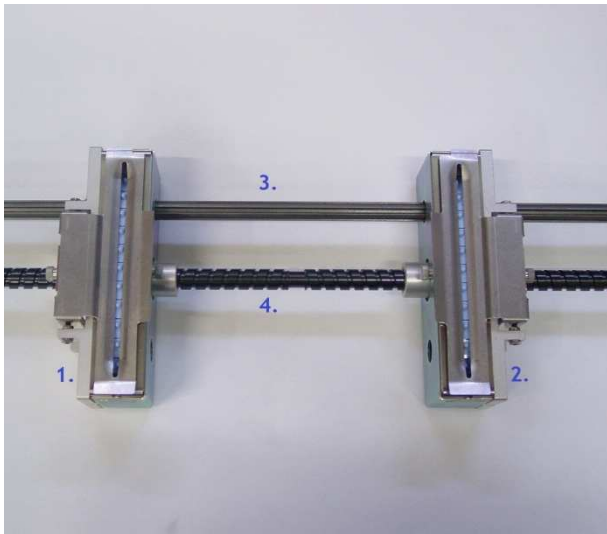
6. SP 004 645  
HEIGHT ADJUSTING  
FOOT ASSEMBLY



- |    |                        |
|----|------------------------|
| 1. | TRANSPORT ASSEMBLY     |
| 2. | PAPER GUIDE, LOWER     |
| 3. | PAPER GUIDE, UPPER     |
| 4. | CENTRE CUTTER ASSEMBLY |
| 5. | TENSION BRUSH ASSEMBLY |
| 6. | INFEEED GUIDE ASSEMBLY |
| 7. | INDEX WHEEL ASSEMBLY   |



TRANSPORT ASSEMBLY



1. SP 007 232  
TRACTOR ASSEMBLY,  
SPLINED, LH



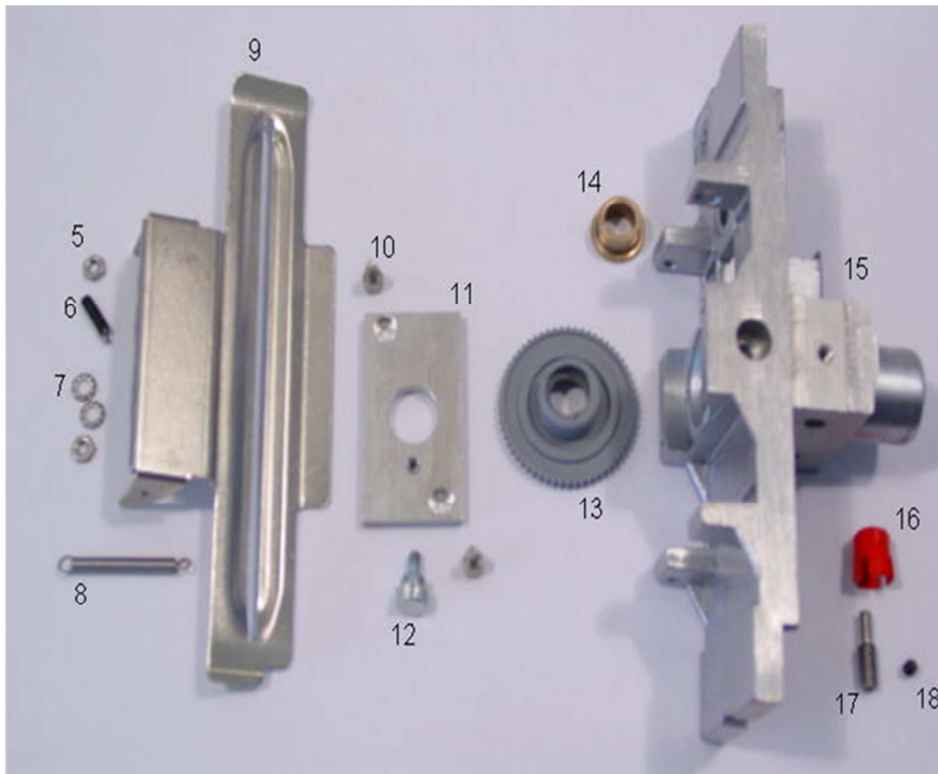
2. SP 007 233  
TRACTOR ASSEMBLY,  
SPLINED, RH



3. SP 007 196  
SHAFT, TRACTOR  
DRIVE, SPLINED



4. SP 004 657  
SCROLL SHAFT



5. SP 000 953  
NUT, M4



6. SP 000 277  
PIN, THREADED,  
ECCENTRIC

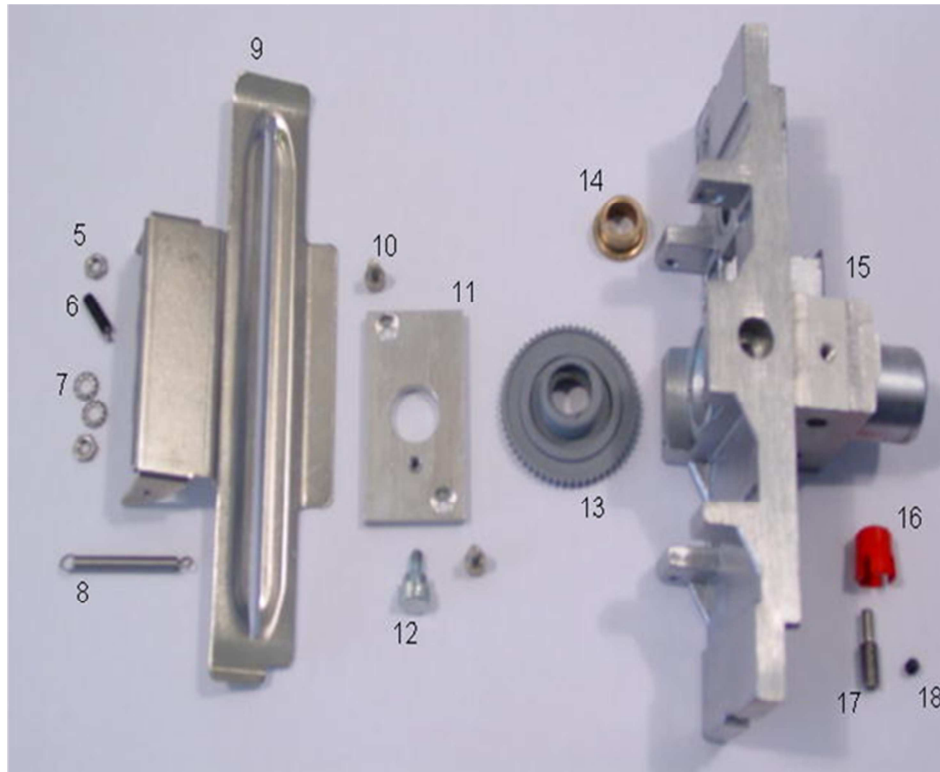


7. SP 000 784  
WASHER, M4



8. SP 000 170  
SPRING, TRACTOR  
FLAP

TRANSPORT ASSEMBLY



9. SP 000 492  
FLAP, TRACTOR, LH



SP 000 493  
FLAP, TRACTOR, RH



10. SP 000 782  
SCREW, M4 X 8MM



11. SP 000 165  
TRACTOR LOCKING  
PLATE



12. SP 001 965  
SCREW, KNURLED



13. SP 005 054  
NUT, SCROLL SHAFT,  
LH



SP 005 055  
NUT, SCROLL SHAFT,  
RH



14. SP 005 119  
BUSH, SCROLL SHAFT



15. SP 004 741  
CASTING, TRACTOR  
HOUSING, LH



16. SP 005 052  
NUT, TRACTOR FLAP  
HEIGHT ADJUSTING

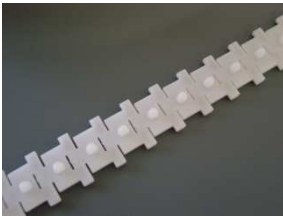
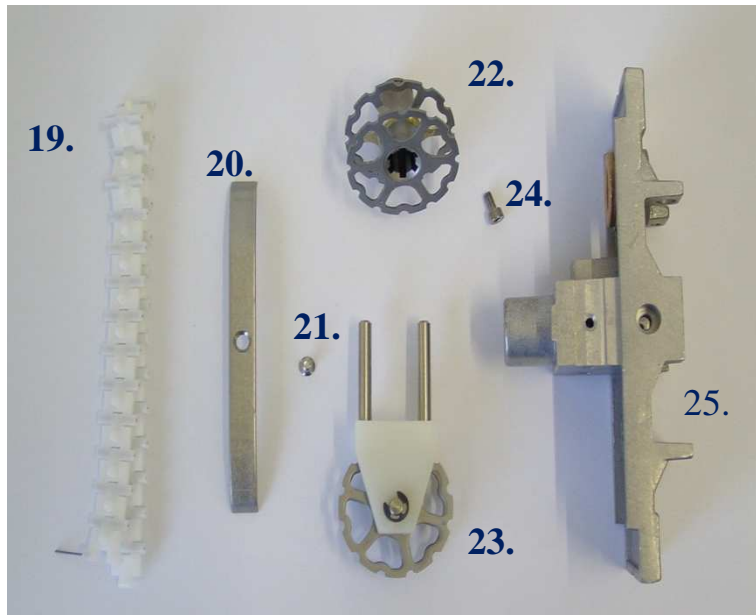


17. SP 003 057  
PIN, THREADED



18. SP 000 047  
SCREW, GRUB, M4 X  
4MM

TRANSPORT ASSEMBLY



19. SP 000 198  
LINK CHAIN  
STANDARD



20. SP 004 452  
GUIDE, TRACTOR LINK  
CHAIN



21. SP 000 412  
SCREW, M4 x 8MM,  
COUNTERSUNK



22. SP 005 037  
SPROCKET, TRACTOR,  
SPLINED



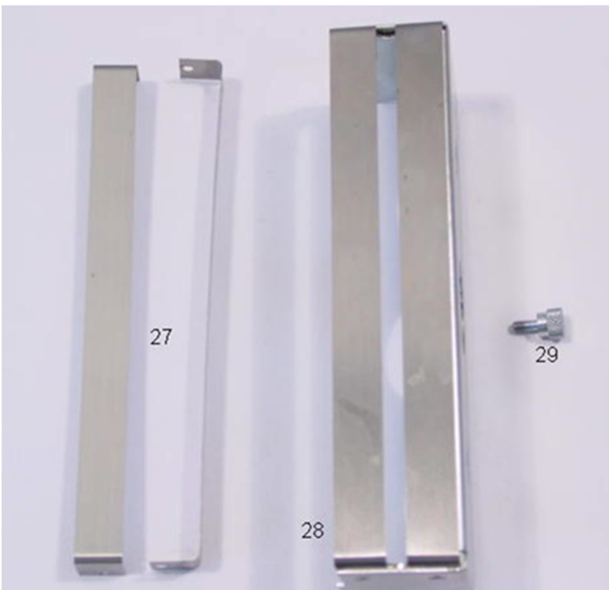
23. SP 005 053  
SPROCKET, FREE  
TRACTOR



24. SP 000 621  
SCREW, M4 x 12MM



25. SP 004 740  
CASTING, TRACTOR  
HOUSING, RH



27. SP 004 852  
FOIL, COVER  
TRACTOR BOX



28. SP 004 699  
COVER, TRACTOR BOX



29. SP 001 965  
SCREW, KNURLED

PAPER GUIDE, LOWER & UPPER



SP 007 228  
PAPER GUIDE, LOWER



SP 000 228  
PAPER GUIDE, UPPER

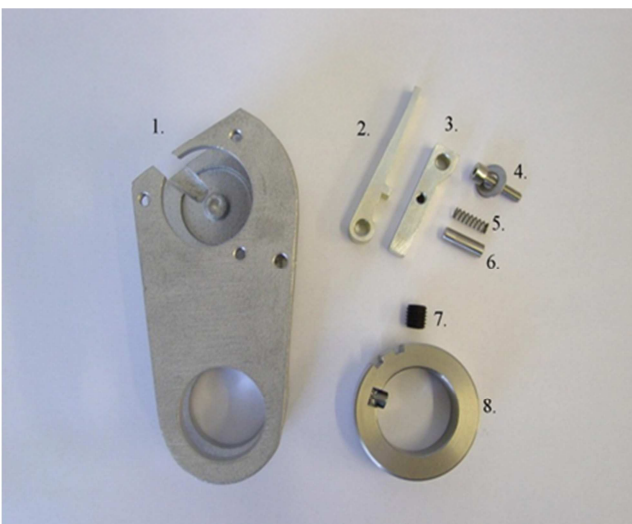
CENTRE CUTTER ASSEMBLY



SP 003 108  
CENTRE CUTTER ASSEMBLY [COMPLETE]

OPTIONAL CENTRE CUTTERS USED TO SPLIT WEB INTO SEPARATE STREAMS.

UP TO FOUR CUTTERS MAY BE FITTED.



1. SP 006 038  
BEARING ARM



2. SP 003 041  
LEVER, LOCKING

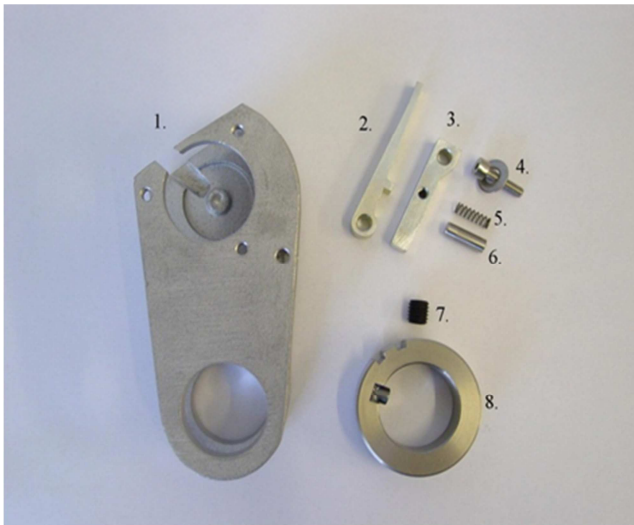


3. SP 003 031  
MOUNT, LOCKING  
LEVER



4. SP 000 851  
SCREW, M4 X 16MM  
[ WITH WASHER SP 007 033]

CENTRE CUTTER ASSEMBLY



5. SP 000 240  
SPRING, LOCKING  
LEVER



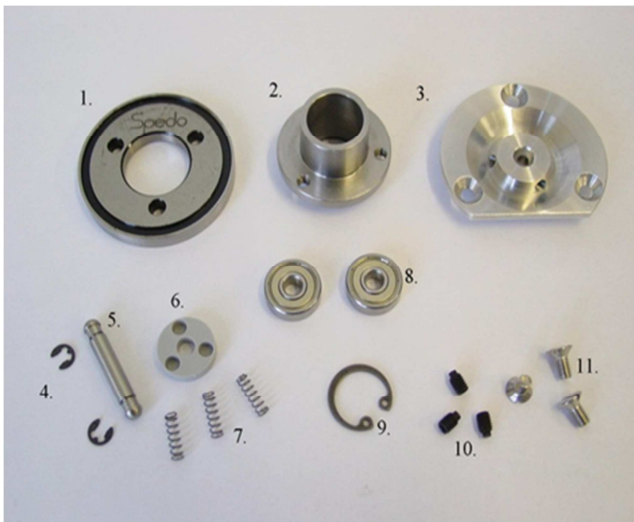
6. SP 004 847  
PIN, HINGE



7. SP 000 892  
SCREW, M8 x 8MM,  
GRUB



8. SP 006 342  
RING, CLAMPING



1. SP 000 063  
BLADE, 45°



2. SP 003 229  
HUB, CENTRE CUTTER  
TOP



3. SP 003 002  
PLATE, CENTRE  
CUTTER



4. SP 002 022  
CIRCLIP, 4MM, E-TYPE



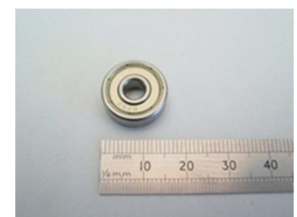
5. SP 003 075  
AXLE, CENTRE CUTTER  
TOP HUB



6. SP 003 062  
PLATE, SPRING



7. SP 002 228  
SPRING, SPRING PLATE



8. SP 004 615  
BEARING, CENTRE  
CUTTER TOP HUB



9. SP 004 838  
CIRCLIP, 16MM,  
INTERNAL

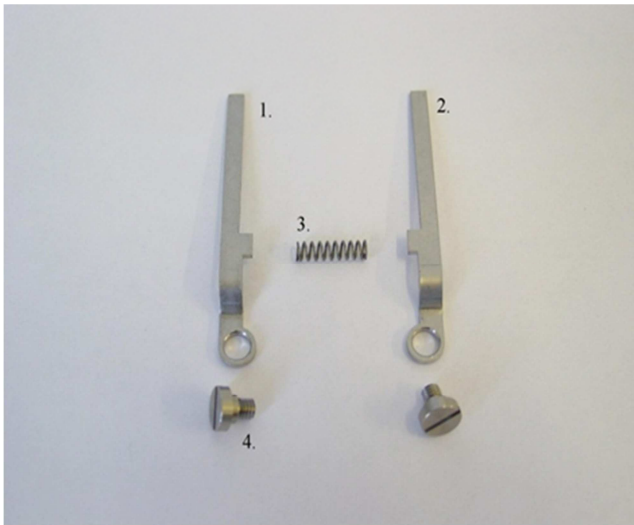


10. SP 000 854  
SCREW, M4 x 6MM,  
GRUB



11. SP 000 412  
SCREW, M4 x 8MM,  
COUNTERSUNK

CENTRE CUTTER ASSEMBLY



1. SP 004 845  
LEVER, SIDE  
ADJUSTING, LH



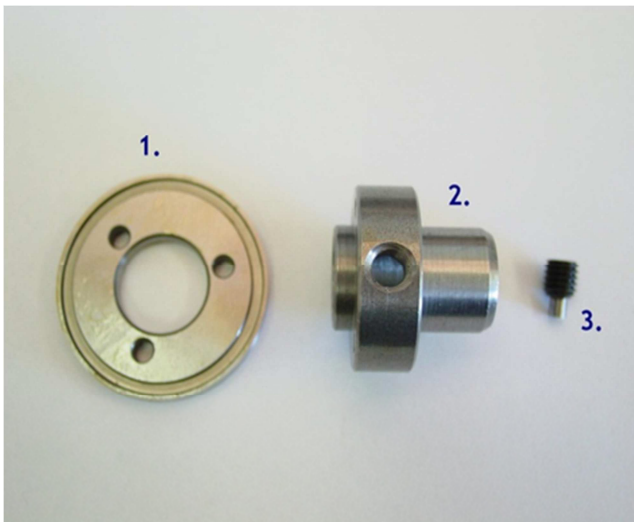
2. SP 004 475  
LEVER, SIDE  
ADJUSTING, RH



3. SP 000 330  
SPRING, PRESSURE



4. SP 004 712  
SCREW, SHOULDERED



1. SP 000 064  
BLADE, 90°



2. SP 001 913  
HUB, LOWER



3. SP 004 631  
SCREW, CENTRE  
CUTTER



SP 000 389  
BRIDGE, CENTRE  
CUTTER

TENSION BRUSH ASSEMBLY



SP 000 161  
INTAKE BRUSH, COMPLETE,  
STANDARD



SP 000 173  
BRUSH STRIP,  
REPLACEMENT, STANDARD



SP 002 186  
INTAKE BRUSH, COMPLETE,  
ANTI-STATIC



SP 000 673  
BRUSH STRIP, REPLACEMENT,  
ANTI-STATIC



SP 000 672  
SPRING, INTAKE BRUSH



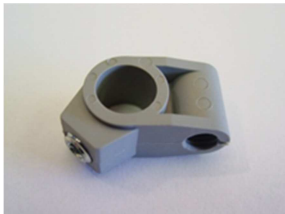
SP 003 040  
LEVER, INTAKE BRUSH



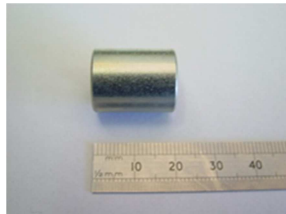
SP 003 071  
SCREW, KNURLED, INTAKE  
BRUSH



SP 001 053  
SPACER

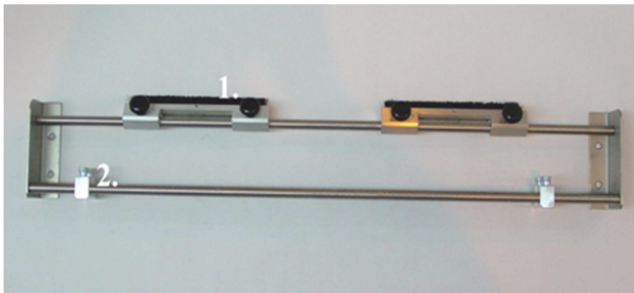


SP 000 042  
MOUNT, INTAKE BRUSH



SP 003 023  
BUSH, INTAKE BRUSH

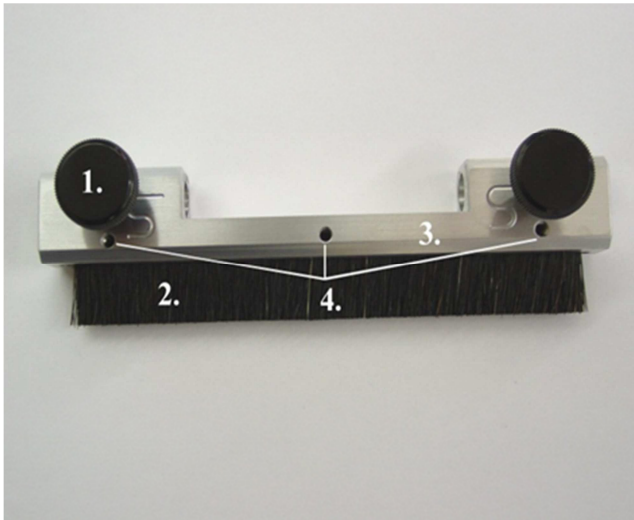
INFEEED GUIDE ASSEMBLY



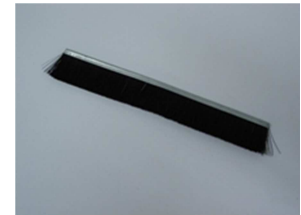
1. SP 006 526  
INFEEED GUIDE BRUSH  
ASSEMBLY



2. SP 006 533  
INFEEED PAPER GUIDE



1. SP 000 318  
KNOB, KNURLED



2. SP 006 527  
BRUSH, INFEEED GUIDE  
ASSEMBLY



3. SP 006 490  
MOUNT, INFEEED GUIDE  
ASSEMBLY



4. SP 000 046  
SCREW, M4 x 6MM,  
GRUB



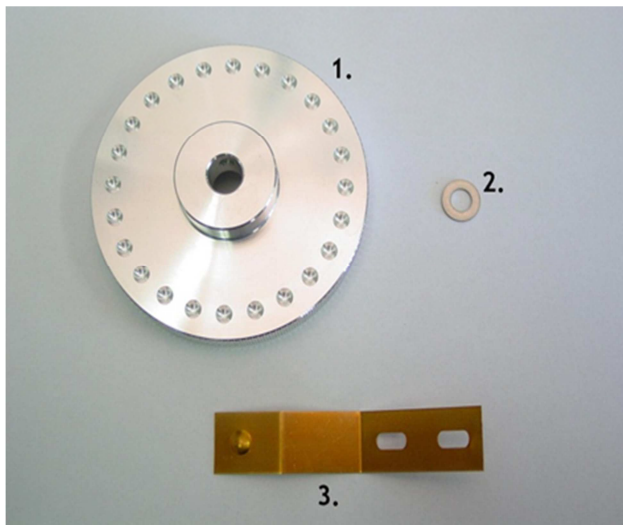
1. SP 001 965  
SCREW, KNURLED



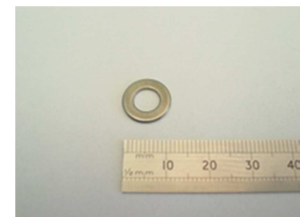
2. SP 006 491  
SLIDING PIECE, INFEEED  
GUIDE



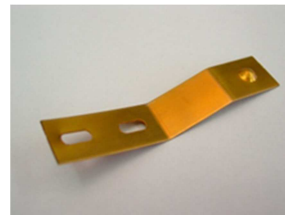
INDEX WHEEL ASSEMBLY



1. SP 005 218  
HANDWHEEL, SPLINED  
SCROLL SHAFT



2. SP 004 664  
SPACER, SCROLL SHAFT



3. SP 003 436  
DETENT, SPRING

SAFETY COVER ASSEMBLY



SP 007 188  
SAFETY COVER



1. SP 006 810  
CAM, SAFETY COVER



2. SP 006 811  
SPINDLE, SAFETY  
COVER CAM



3. SP 006 812  
SPINDLE, SAFETY  
COVER

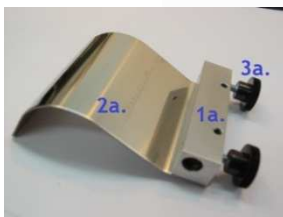


4. SP 006 833  
SAFETY COVER STOP



5. SP 001 639  
FOOT, RUBBER, GREY

OUTFEED COMPONENTS



1. SP 006 832  
PAPER OUTFEED  
GUIDE ASSEMBLY



1A. SP 005 065  
GUIDE MOUNT



2A. SP 006 805  
PAPER GUIDE PATE



3A. SP 000 318  
KNOB, KNURLED  
M5 X 10MM



2. SP 007 227  
MINI PAPER GUIDE



3. SP 007 226  
MAGNETIC WEB  
GUIDE ASSEMBLY



4. SP 004 645  
FOOT ASSEMBLY